

مركز أبوظبي  
للصحة العامة  
ABU DHABI PUBLIC  
HEALTH CENTRE



# CERVICAL CANCER Awareness

Cancer Prevention & Control

# Outlines

Cervix Structure and Function

What is Cervical Cancer?

What are the Stages of Cervical Cancer?

Cervical Cancer Facts and Statistics

Risk Factors of Cervical Cancer

Who are exposed to cervical cancer?

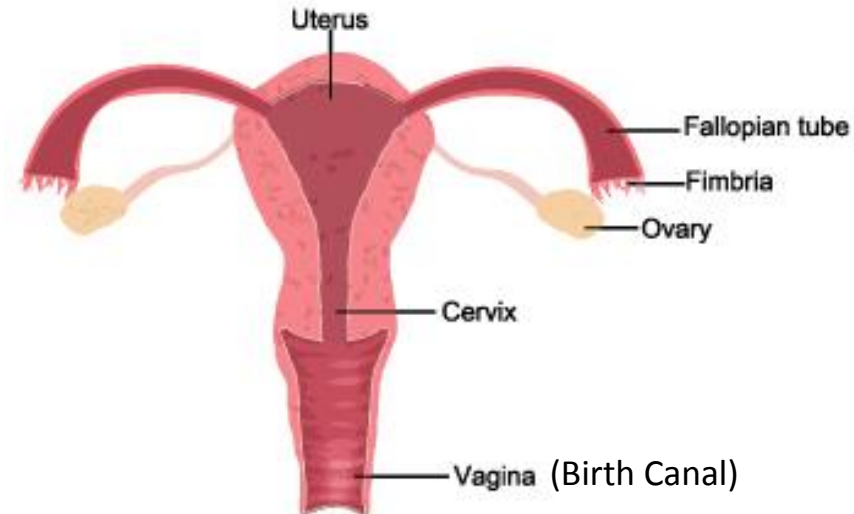
Cervical Cancer Symptoms

Cervical Cancer Prevention & early detection

List of Cancer Screening centers providing the HPV Vaccine

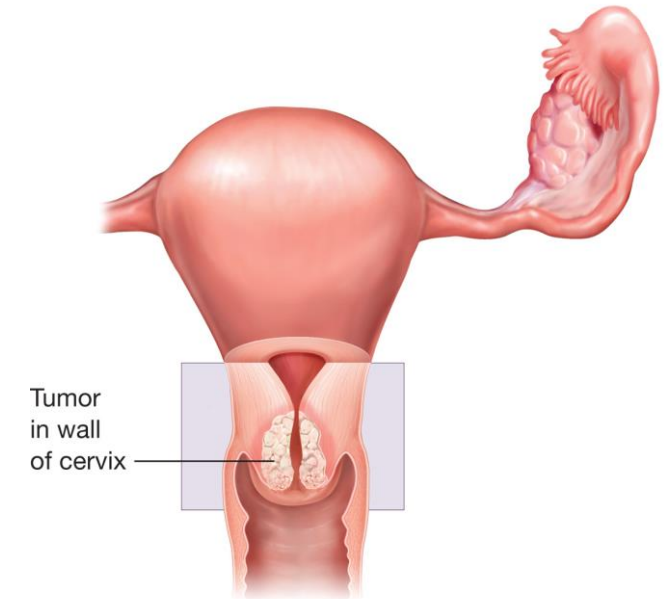
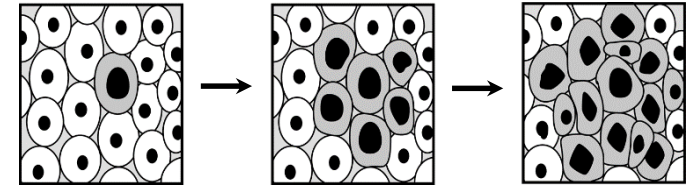
# Cervix Structure and Function

The cervix is the lower narrow end of the uterus that connects the upper part of the uterus (womb) with the vagina (birth canal).

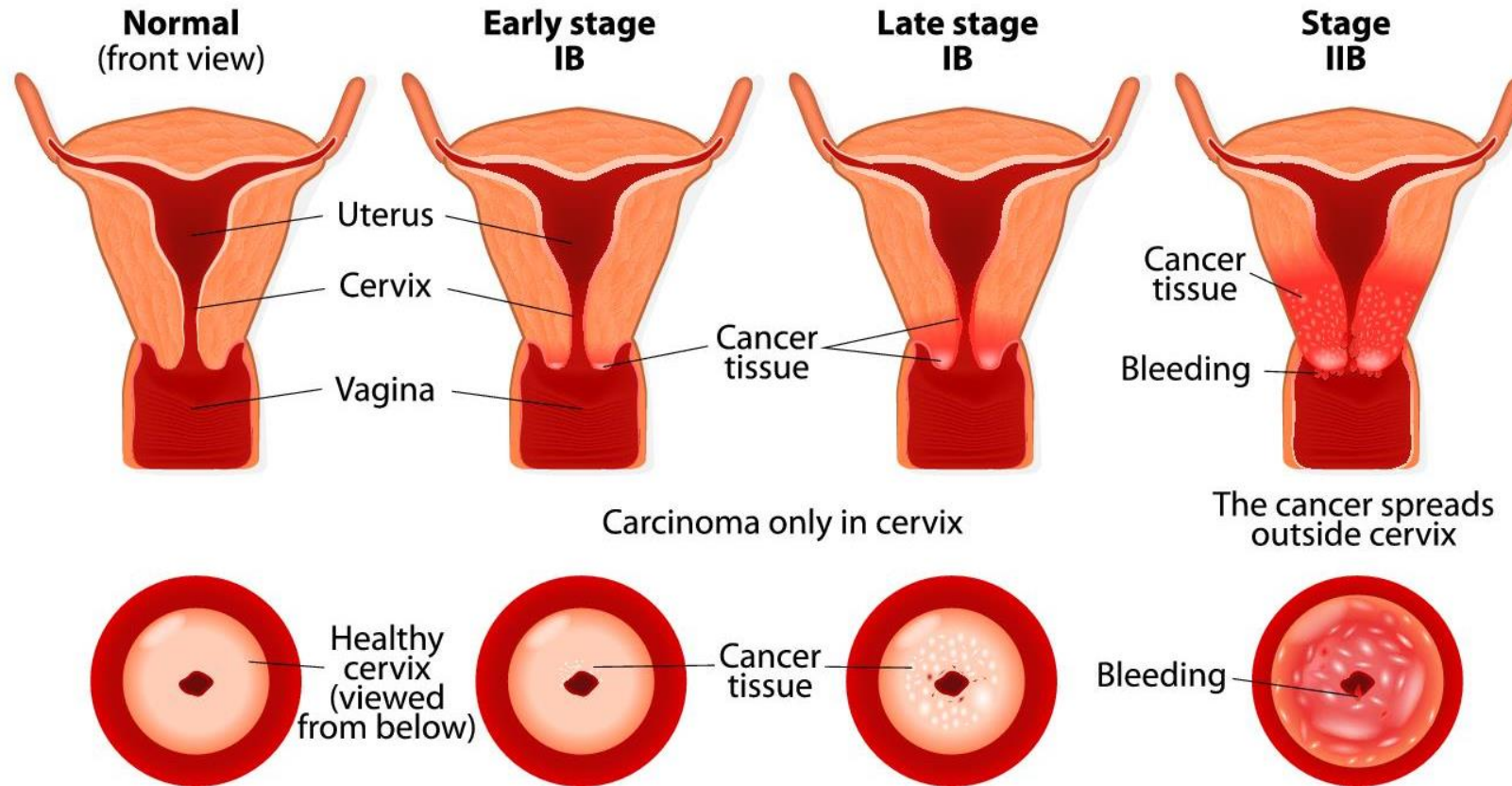


# What is Cervical Cancer?

- Cervical cancer develops when cells in the cervix begin to grow out of control and can then invade nearby tissues or spread throughout the body.
- Cervical cancer usually develops very slowly. It starts as a precancerous condition called dysplasia.
- Almost all cervical cancers are caused by Human Papilloma Virus(HPV).
- A woman's sexual habits and patterns can increase her risk for cervical cancer

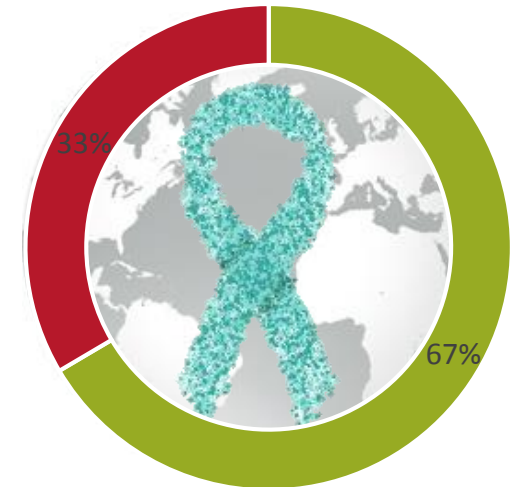


# Stage of Cervical Cancer



# Cervical Cancer Facts and Statistics - Worldwide

- Cervical cancer is the 4<sup>th</sup> most common cancer in women and the 4<sup>th</sup> most common cause of death from cancer among women.
- In 2018, **569,847** women were diagnosed with cervical cancer and **311,365** women dies from the disease.



Cervical Cancer Worldwide

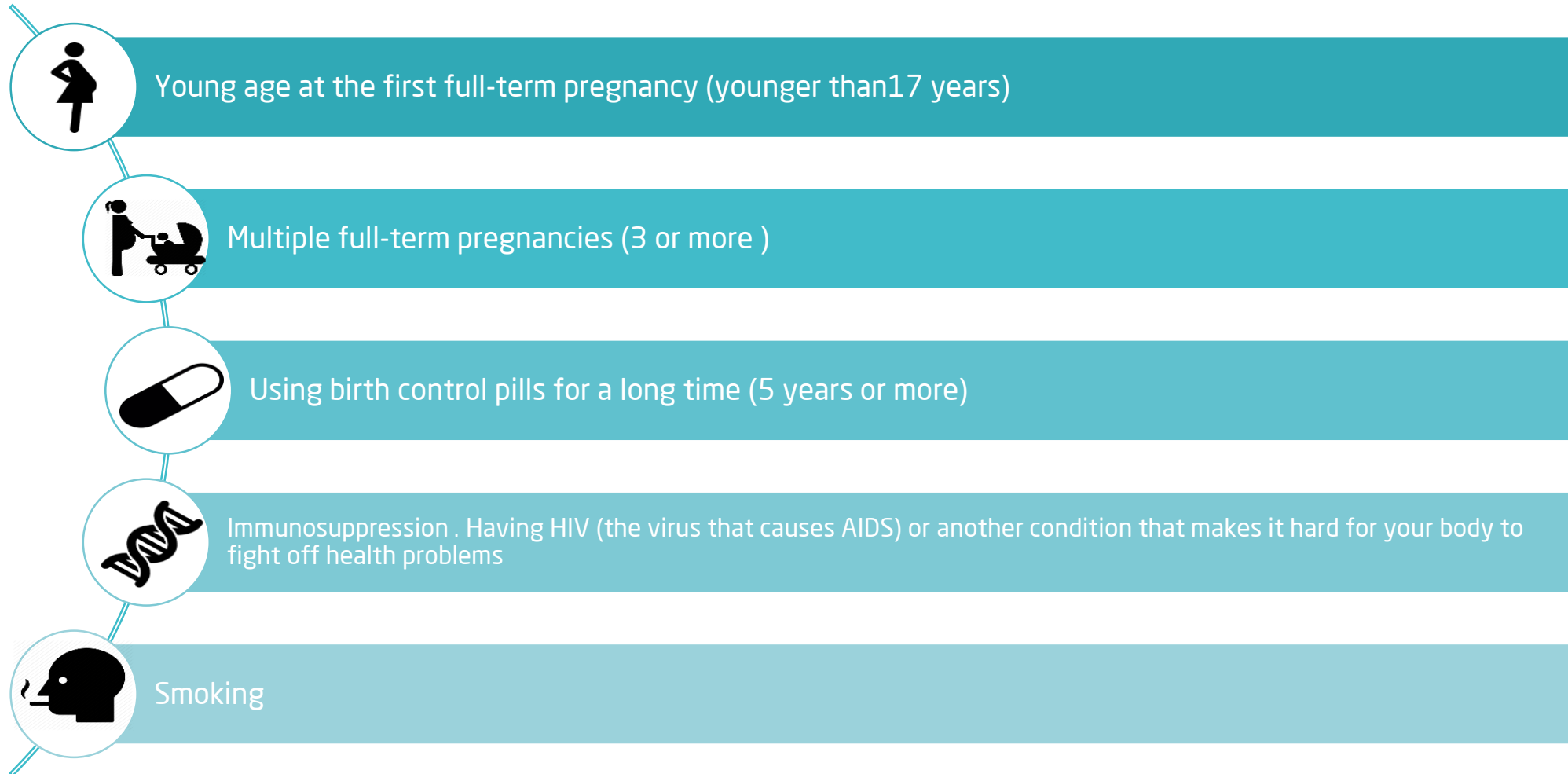
■ Diagnosed ■ Death

# Cervical Cancer Facts and Statistics - Abu Dhabi 2016

- It is the 5<sup>th</sup> leading cancer in females.
- Cervical disease can be prevented, so there is an urgent need to increase rates of cervical cancer prevention and early detection.



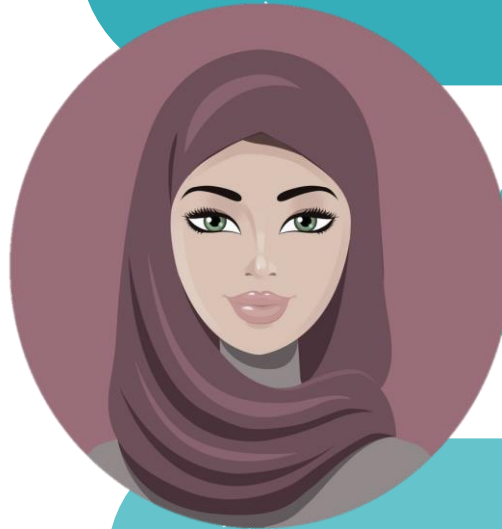
# Risk Factors of Cervical Cancer





# Who are at risk of cervical cancer?

All women are exposed to the risk of developing cervical cancer



Over 70% of sexually active women will get HPV in their lifetime

Cervical cancer is often diagnosed in young women

# Cervical Cancer Symptoms

- The early stage of cancer usually has no symptoms.
- There is no way to self detect an infection.



Abnormal vaginal  
bleeding



Persistent  
pelvic pain



Continues  
vaginal discharge



Pain during  
sexual intercourse



Constant  
fatigue



Heavier and longer  
menstrual cycle

# Cervical Cancer Prevention



مركز أبوظبي  
للصحة العامة  
ABU DHABI PUBLIC  
HEALTH CENTRE



Cervical Cancer can be prevented through:

- HPV Vaccination to prevent the infection with the virus.
- Having regular screening with a Pap Test



# Cervical Cancer primary Prevention - Vaccination

Department of Health recommends HPV vaccine for females 13-26 years old for the prevention of cervical cancer. The vaccine is given once per lifetime, in 3 doses over 6 months or 2 doses over a 12 months (depend on the type of vaccine).

The Department of Health provides vaccination:

- For School girls, students 13-17 years old.
- For women aged 18-26 and who have never been immunized.



**It recommended to get the HPV vaccine few years before marriage**

# Cervical Cancer Screening?



## Cervical Cancer

### Age

25-29

30-65

### Tool

Pap test

Pap test and  
HPV as co-  
test

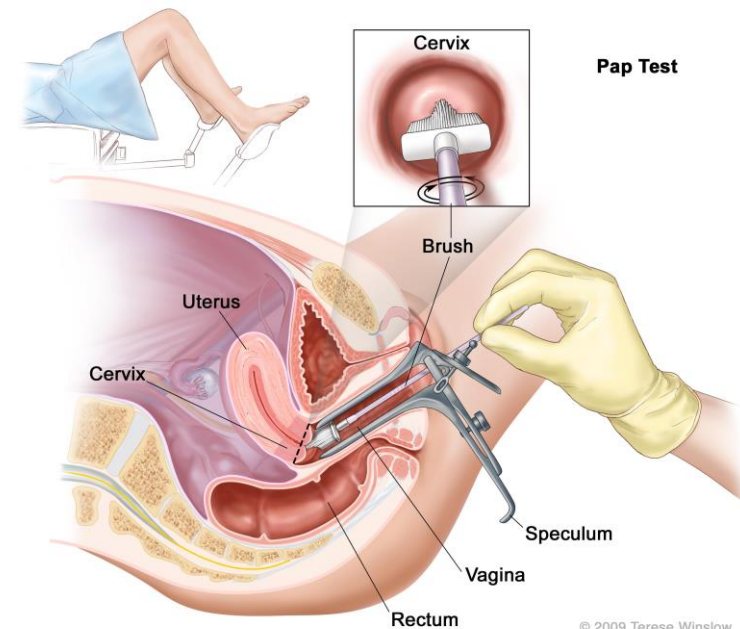
### Interval

Every 3  
years

Every 5  
years

# Cervical Cancer screening and early detection

- Regular screening helps early detection of cervical cancer of abnormal cells, thus providing greater opportunities for healing.
- It is estimated that early detection and treatment can prevent up to 75% of cervical cancers from developing.
- Pap Test screens for cervical cancer only.
- Even if you have a Pap test regularly, if you notice any signs or symptoms that are unusual for you, see a doctor to find out why you're having them.



# List of Cancer Screening centers providing the HPV Vaccine



| Abu Dhabi City          | Al Dafrah Region       | Eastern Region                  |
|-------------------------|------------------------|---------------------------------|
| Al Maqta H C            |                        | Neima H C                       |
| Khalifa A H C           |                        | Muwaiji H C                     |
| Bani Yas H C            | Al Dhafra FMC          | Mezyad H C                      |
| Bateen H C              | Madiant Zayed Hospital | Oud Al Touba FMC                |
| Rowdah H C              | Ghiathy Hospital       | Maqam H C                       |
| Mushref H C             | Marfa Hospital         | Al Jahili HC                    |
| Al Rahba Hospital       | Liwa Hospital          | Police Medical Services -Al Ain |
| Al Mafraq Hospital      | Delma Hospital         |                                 |
| Police Medical Services | Al Sila Hospital       |                                 |
| Zayed Military Hospital |                        |                                 |

\*For more Colorectal cancer screening centers, visit [www.haad.ae/simplycheck.ae](http://www.haad.ae/simplycheck.ae)

Keep in touch with us for:

- Questions and more information
- Request Educational Materials
- List of Cancer Screening centers
- List of Cancer Support Groups

[www.doh.ae/simplycheck.ae](http://www.doh.ae/simplycheck.ae)

800 555



اتصل على





الصحة أمان والفحص اطمئنان  
Live Healthily & Simply Check

# References

- National Cancer Institute ([www.cancer.gov](http://www.cancer.gov))
- American cancer society
- Statistics globocan
- ADCCR 2016

مركز أبوظبي  
للصحة العامة  
ABU DHABI PUBLIC  
HEALTH CENTRE



ADPHC\_AE



ADPHCAE



ADPHC.AE



ADPHC-AE

WWW.ADPHC.AE



+971 56 231 2171