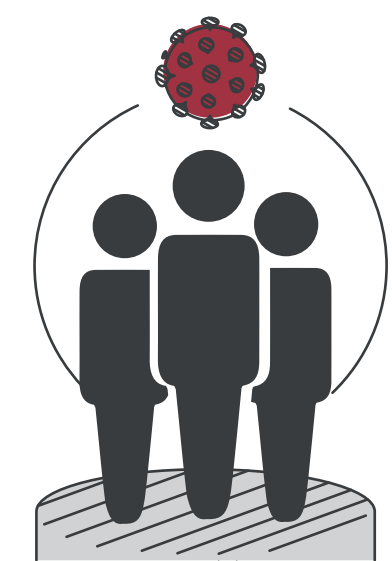
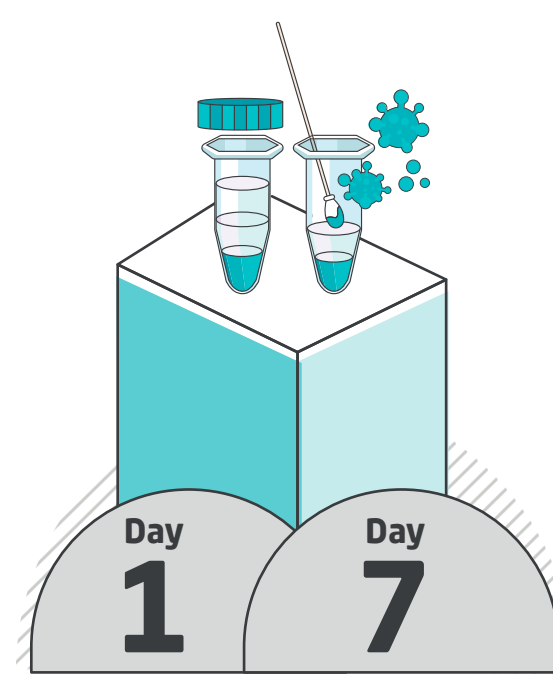


## Close Contacts Procedures for Citizens & Residents



In contact with  
a positive case  
Vaccinated & not vaccinated

### PCR Test



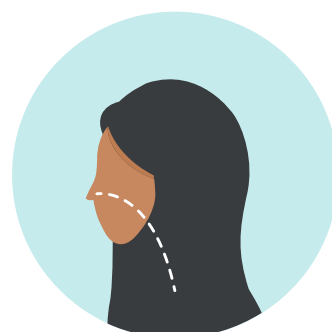
Test in any healthcare facility

Home quarantine is no longer required and you can move on with your normal life as soon as a negative result is obtained with no symptoms

## COVID-19 Symptoms



Headache



Shortness of  
breath



Fever



Cough



Sore  
Throat

If you develop any COVID-19 symptoms, please do a PCR test or visit the nearest hospital if the symptoms are severe

### For positive test results

In case of emergencies, head directly to the nearest emergency hospital without the need to take a movement permit or call 999

## Abu Dhabi

For those who received 1 positive cases from the following categories:  
Seniors (50 years and above), those with chronic diseases, those who have any severe symptoms or pregnant women

- COVID-19 Prime Assessment Center - Al Mushrif (as per SMS instructions sent onsite)



Working hours: All days of the week - 8:00 AM - 8:00 PM

### Othe categories

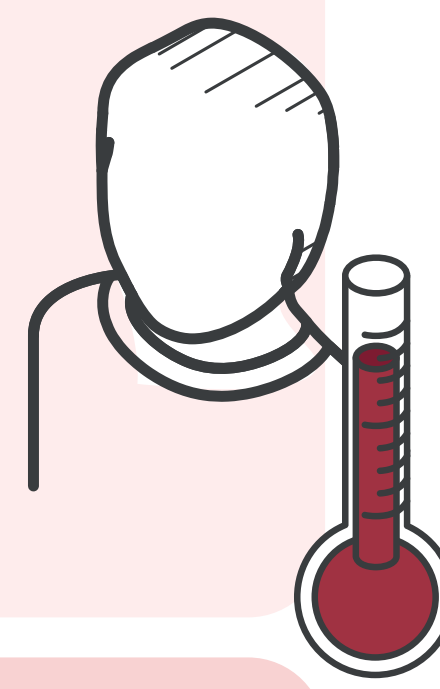
Mild or medium symptoms and no chronic disease

One positive PCR test result and is not among the above categories

- Retest at any health facility in the Emirate

Two positive PCR test results and is not among the above categories

- Self-isolate at home and the Covid-19 virtual assessment center will contact you to complete the isolation measures.



## Al Ain

For those who received 1 positive cases from the following categories:  
Seniors (50 years and above), those with chronic diseases, those who have any severe symptoms or pregnant women

- COVID-19 Prime Assessment Center, Convention Centre, Al Khabaisi - Hall 7



Working hours: All days of the week - 8:00 AM - 10:00 PM

### Othe categories

Mild or medium symptoms and no chronic disease

One positive PCR test result and is not among the above categories

- Retest at any health facility in the Emirate

Two positive PCR test results and is not among the above categories

- Self-isolate at home and the Covid-19 virtual assessment center will contact you to complete the isolation measures.

## Al Dhafra

For those who received 1 positive cases from the following categories:  
Seniors (50 years and above), those with chronic diseases, those who have any severe symptoms or pregnant women

- COVID-19 Prime Assessment Center in Zayed City



Working hours: All days of the week - 8:00 AM - 10:00 PM

- Al Dhafra Hospitals - SEHA

Gayathi	Liwa	Al Sila
Dalma	Al Marfa	



Working hours: All days of the week - 8:00 AM - 7:00 PM

### Othe categories

Mild or medium symptoms and no chronic disease

One positive PCR test result and is not among the above categories

- Retest at any health facility in the Emirate

Two positive PCR test results and is not among the above categories

- Self-isolate at home and the Covid-19 virtual assessment center will contact you to complete the isolation measures.

## Positive cases - Workers

For those who received 1 positive cases from the following categories:  
Seniors (50 years and above), those with chronic diseases, those who have any severe symptoms

- COVID-19 Prime Assessment Center in Mohammed bin Zayed



Working hours: All days of the week - 8:00 AM - 10:00 PM

### Othe categories

Mild or medium symptoms and no chronic disease

One positive PCR test result and is not among the above categories

- Retest at any health facility in the Emirate

Two positive PCR test results and is not among the above categories

- Self-isolate at home and the Covid-19 virtual assessment center will contact you to complete the isolation measures.

For laborers of government and private companies you have to call 909 immediately for coordination of transport to designated isolation facilities.

In case of not presenting to COVID-19 Prime Assessment Center in Mohammed bin Zayed within maximum 24 hours, you shall be subject to legal actions.



8001717

For general inquiries